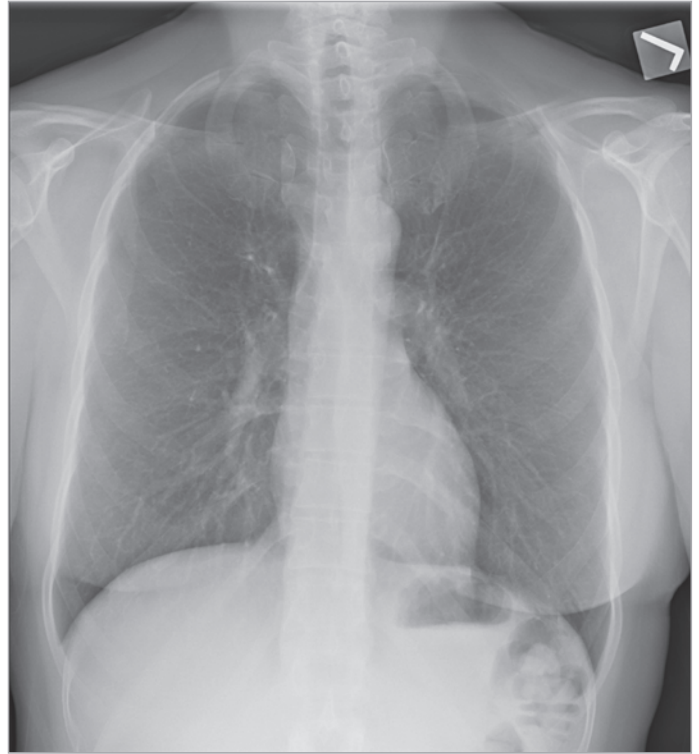


Without Bone Suppression



Companion Image with Bone Suppression

## Gain Greater Confidence in Soft Tissue Imaging.

Visualizing soft tissue in a chest radiograph can be difficult when images of the ribs interfere with tissue image clarity. Our Bone Suppression Software automatically generates a companion image with the posterior ribs and clavicles suppressed. This allows clearer visualization and assessment of pathologies such as lung nodules. The software generates the companion image without additional exposure for the patient or additional set-up for the technologist.

The Bone Suppression Software is a major step forward in the clinical efficacy of chest radiographs. A clinical study showed that the inclusion of the bone-suppressed companion image allowed improved visualization of the lung parenchyma, confidence in reporting the presence of pathology, and preference.\* The software is designed for compatibility with all chest images, including those captured with mobile units.

This option is available for all DRX products as well as DIRECTVIEW Classic, Elite and Max CR running DIRECTVIEW v5.7 Software or higher.



## ADVANTAGES AT A GLANCE

### Our Bone Suppression Software

- Creates the companion image automatically, saving steps and time
- Requires no additional exposure
- Increases confidence in pathology assessment
- Requires no additional workstation
- Features the same user-interface as other Carestream software
- Allows radiologists to toggle easily between views